



EMS MUSCLE

SIMPLE OPERATION/STRAP TYPE/EASY TO OPERATE



Technology

Particularly effective on the buttocks and abdomen, EMS uses High Intensity Focused Electromagnetic Field (HI-EMT) technology to induce short bursts of powerful muscle contractions that lead to increased muscle density, decreased bulk, better definition and improved tone.

EMS is the only procedure to help women and men build muscle and burn fat and the world's first non-invasive butt lift procedure. It works by contractions; Muscle tissue is forced to adapt to such an extreme condition. It responds with a deep remodeling of its internal structure which results in muscle building, tightening, toning and fat burning.

EMS Helps patients achieve leaner, more athletic body contours, by reducing abdominal fat and simultaneously developing the muscle bases below the fat. When applied to buttocks EMS gives patients a more lifted and athletic shape.

EMS does not use a heating/cooling principle, so there is no risk of burning, scarring or swelling. The recommended treatment plan is four 30-minute treatment sessions over two weeks. Best results will be seen after 3 months with continued improvement over six months. EMS Strengthen gluteal or abdominal muscles and burn fat, while relaxing, lying down.

+16%

Estimated increase in muscle mass

-19%

Estimated fat reduction

EMS BODY



4 cm (1.5 inches) loss in waistline circumference



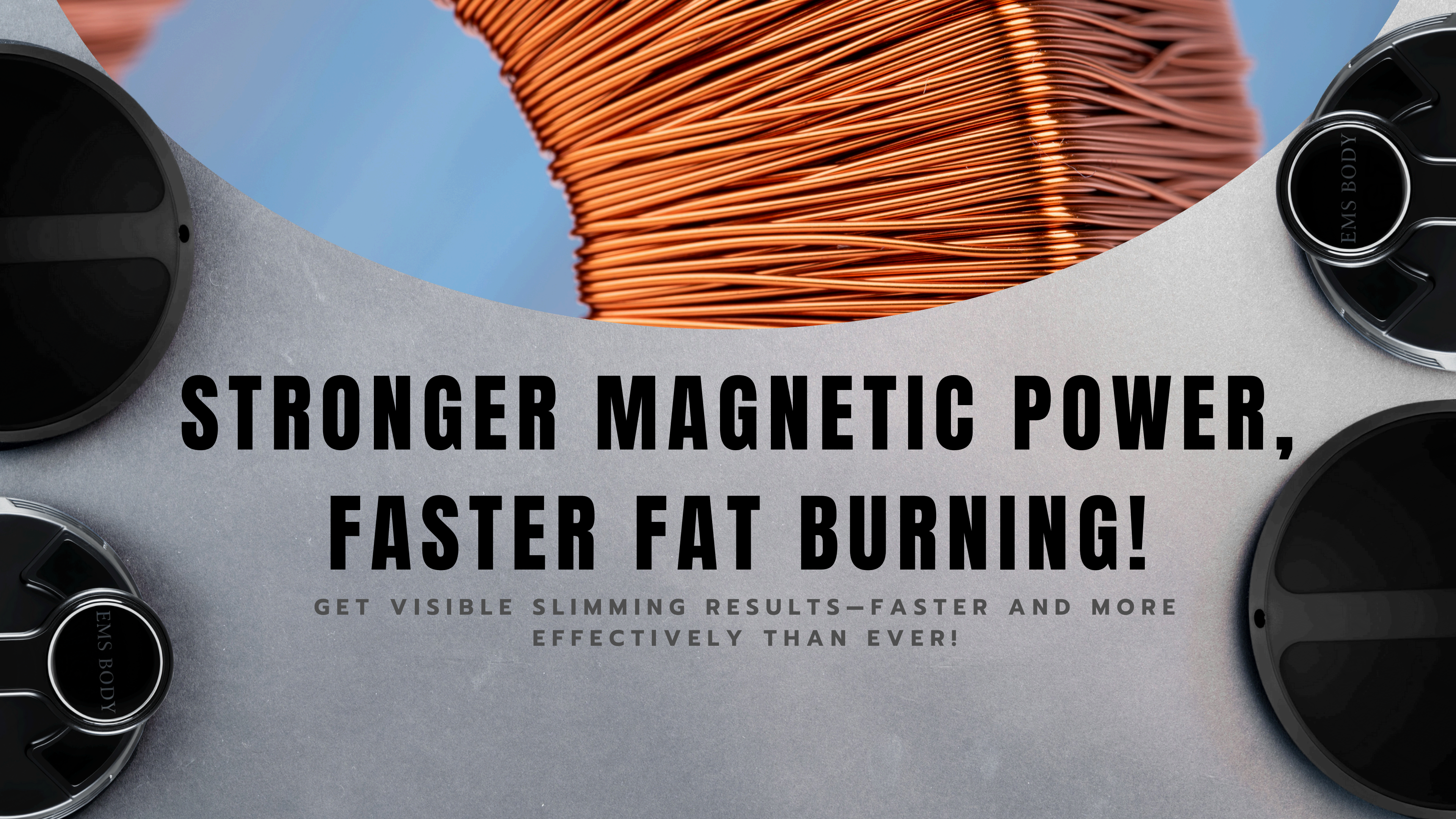
11% reduction in abdominal muscle separation (called diastasis recti)



5 x increase in fat metabolism 80% patients with visible lifting



effect of buttocks 96% patient satisfaction



STRONGER MAGNETIC POWER, FASTER FAT BURNING!

GET VISIBLE SLIMMING RESULTS—FASTER AND MORE
EFFECTIVELY THAN EVER!



Dual Copper Discs

Unleash a New Era of Magnetic Power

2x Magnetic Strength

1.5x Enhanced Treatment

2x Frequency Boost

Revolutionary magnetic tech—Redefining arm contouring.

High Efficiency

Save time and effort

30 = 30000

Min

Muscle contractions



Operating parts

The location of the handle operation must be consistent with the interface selection location

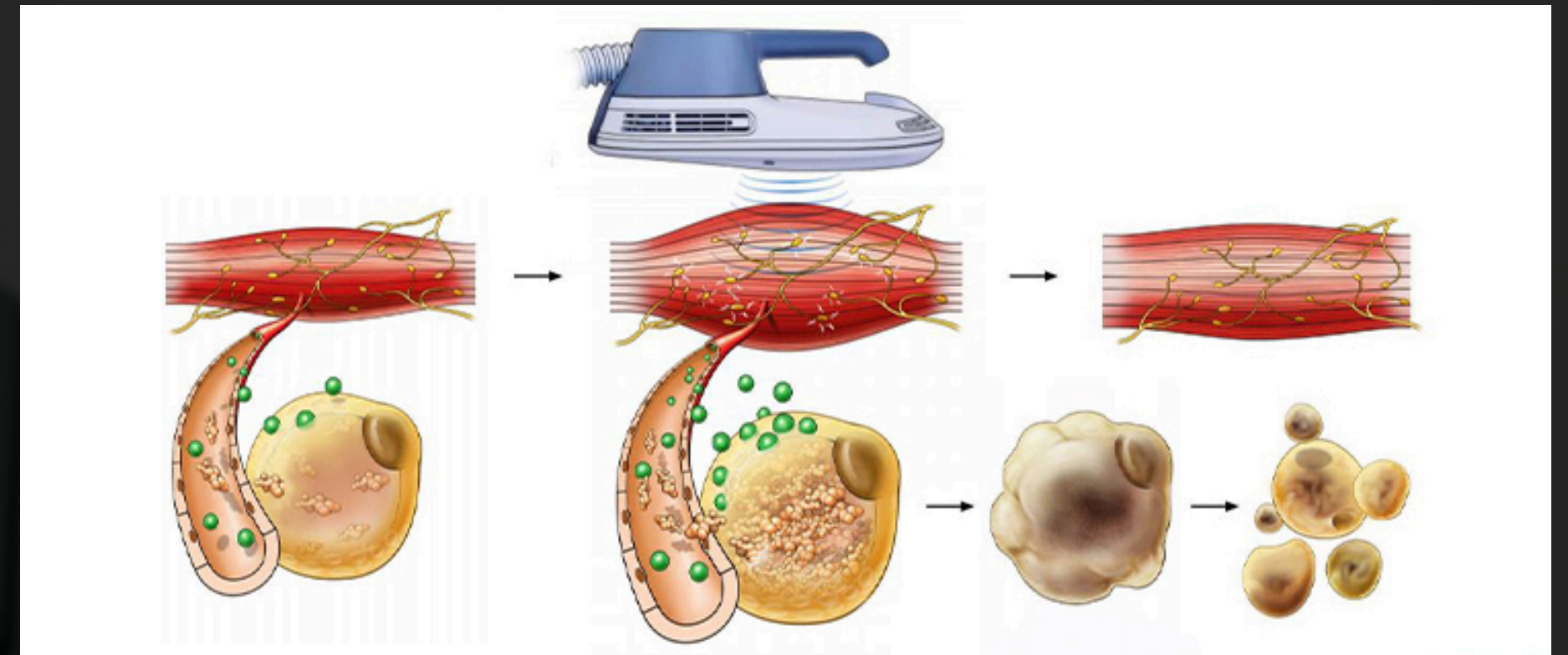


HOW IT WORKS

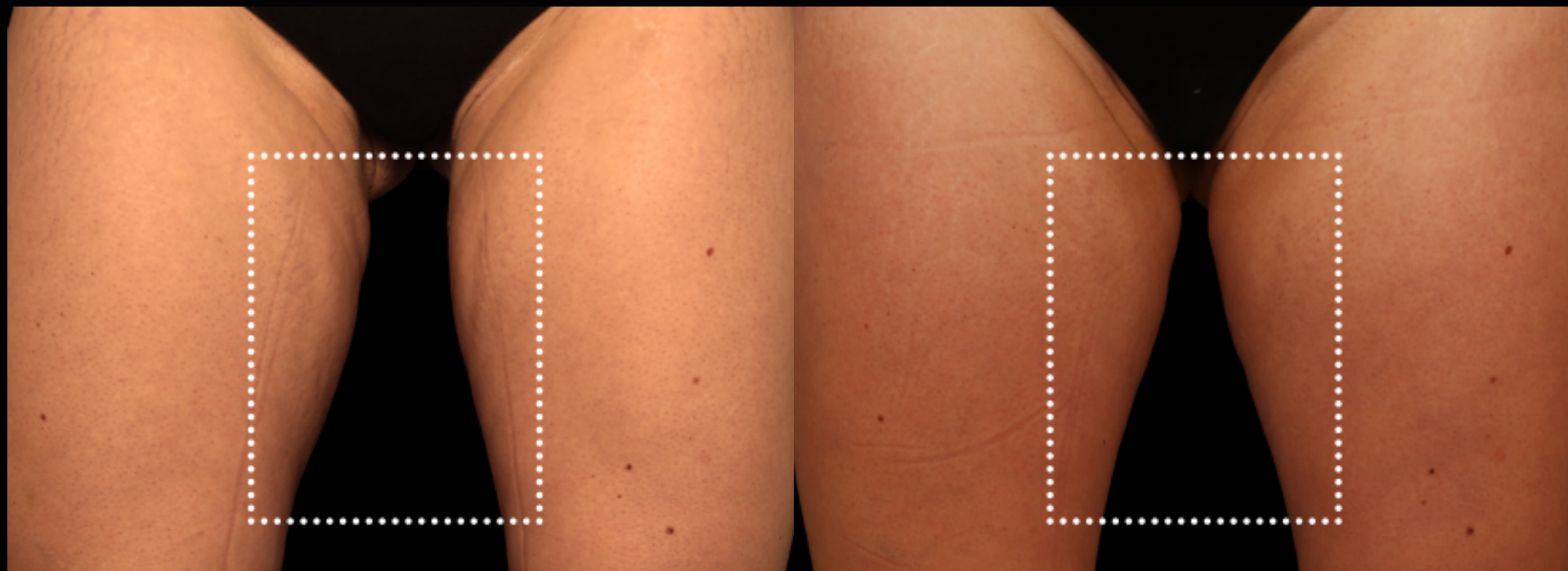
EMSCULPT with HIFEM technology induces supramaximal muscle contractions not achievable by voluntary action. When exposed to supramaximal contractions, the muscle tissue is forced to adapt to such extreme condition.

The muscle responds with a deep remodeling of its inner structure, i.e., the growth of myofibrils (muscle hypertrophy) and creation of new protein strands and muscle fibers (muscle hyperplasia).

The process results in increased muscle density and volume.

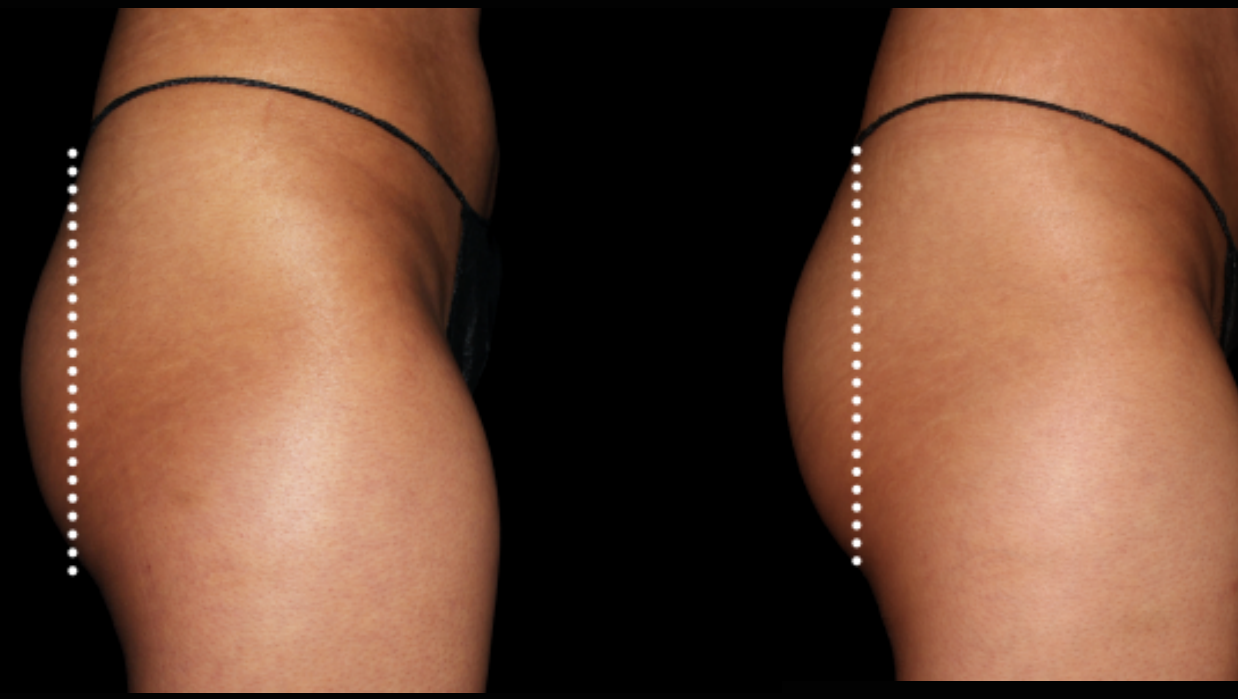


AMAZING EFFECT



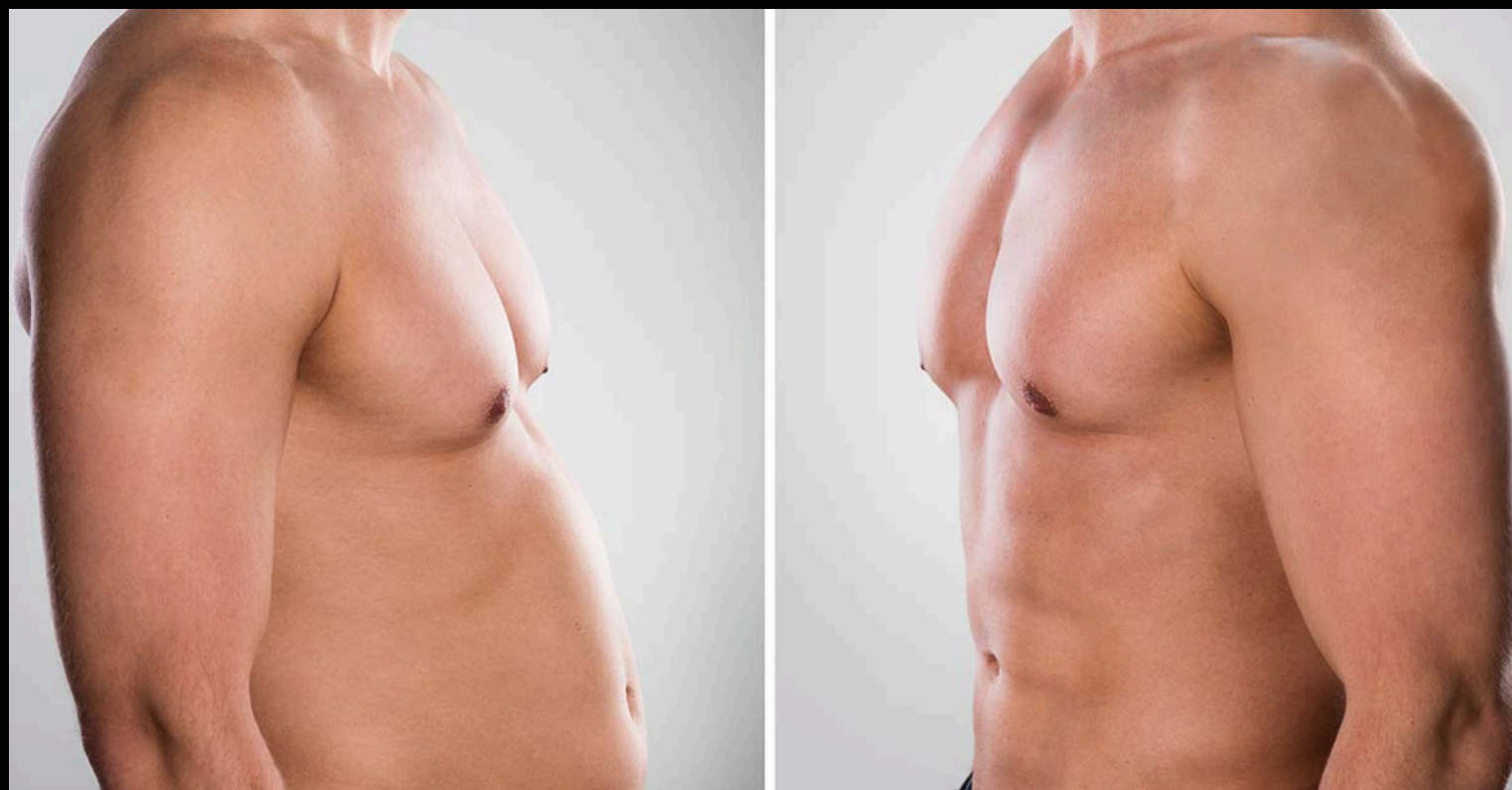
Before

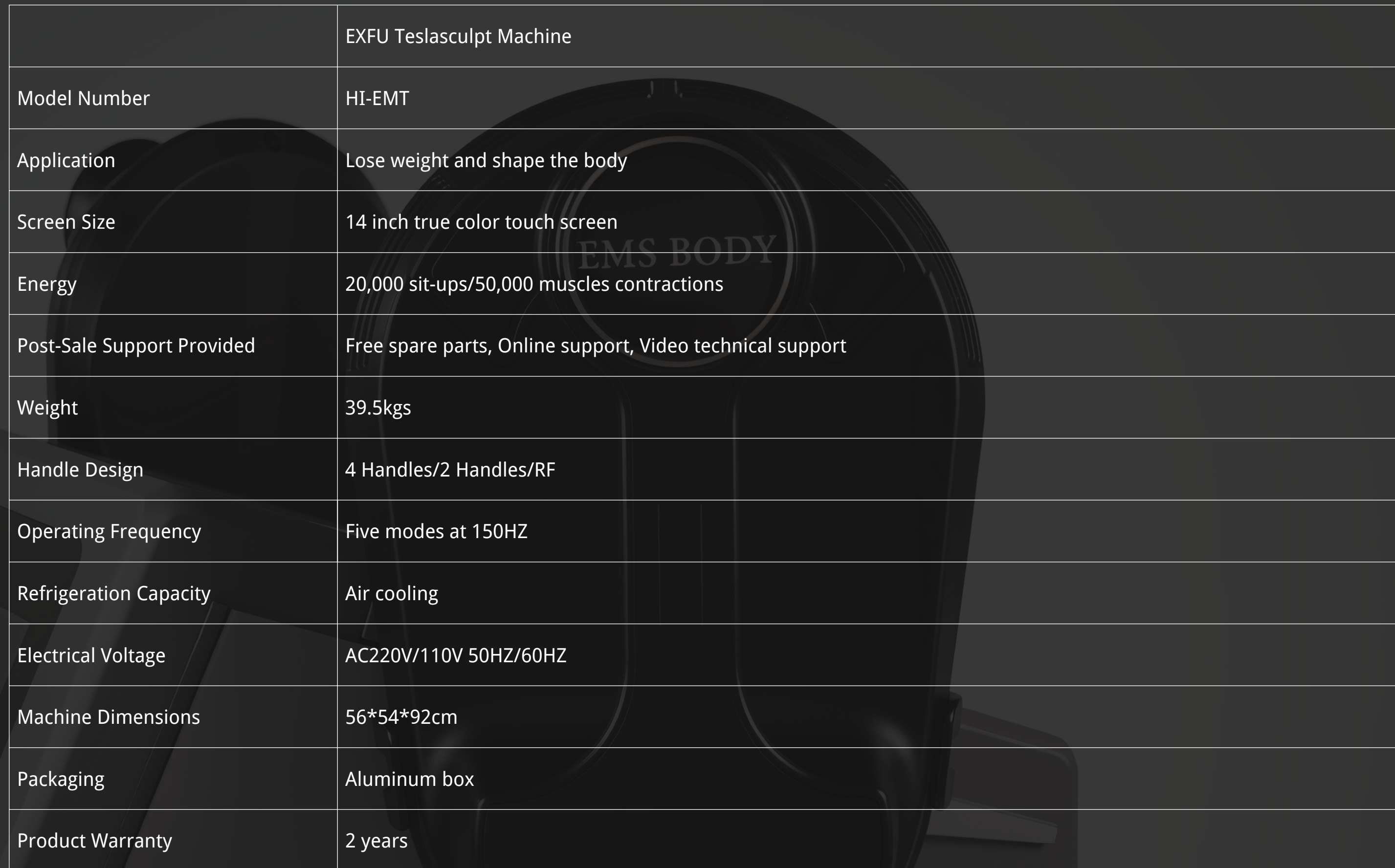
After



Before

After





	EXFU Teslasculpt Machine
Model Number	HI-EMT
Application	Lose weight and shape the body
Screen Size	14 inch true color touch screen
Energy	20,000 sit-ups/50,000 muscles contractions
Post-Sale Support Provided	Free spare parts, Online support, Video technical support
Weight	39.5kgs
Handle Design	4 Handles/2 Handles/RF
Operating Frequency	Five modes at 150HZ
Refrigeration Capacity	Air cooling
Electrical Voltage	AC220V/110V 50HZ/60HZ
Machine Dimensions	56*54*92cm
Packaging	Aluminum box
Product Warranty	2 years